



May 2019

Dear Member

Welcome to the May 2019 edition of our Newsletter. I hope that you enjoy reading this and other Newsletters but also hope that if not, you would let me know what changes you would like to see made. I am always open to ideas for topics and articles so do please get in touch.

Membership

Membership renewals fall due at the Annual General Meeting in March. Thank you to all of you who renewed then and have subsequently done so. If you have not yet renewed, do not panic but send a cheque to me (details at the end of this newsletter) or to any of the committee members, The Forge, Park Street or by bank transfer. If you choose the latter the sorting code is 40-32-03 and the account number is 91001108. Please be sure to add your surname (and if there is room, your initials) into the reference section. We will get your membership card to you. You can of course come along to our next meeting, which will be another excellent lecture, and renew your membership. The fee this year, remains unaltered at £12.00 for a single member and £18.00 for joint members (terms and conditions apply). So, for around £1.00 per month you have 8 lecture evenings and two Summer Visits to look forward to.

Meeting Report.

Fire! Fire!

LEICESTERSHIRE
FIRE and RESCUE SERVICE

protecting our communities



Andy

Ash



Our lecture this month was kindly provided by the Leicestershire Fire Service, actually from the Market Bosworth Fire Station. Andy Tedds organised the event with me and he is a full-time firefighter but as he lives in Market Bosworth, he is also a retained Firefighter at the Station in Market Bosworth. Andy carries a bleeper with him in case, when he is not working in Hinckley, he is needed by Market Bosworth Station. His colleague Ash was also a retained firefighter from Market Bosworth, but he is employed as a firefighter by Jaguar Rover. Andy began by relating his experiences at the fire in Hinckley Road, Leicester where 5 people died, and which we now know was arson. Andy explained that the accelerants used, petrol and bar-be-que lighter fuel exploded and effectively demolished the building. All buildings in that row

were damaged. The flat above fell into the cellar with the roof on top. One can only imagine the horror of that night. We then heard about the forensic operation, carried out by the Leicestershire Fire and Rescue Service, long after the fire was extinguished, searching for clues of the cause and later clues to convict the perpetrators of this horrific act.

On show was a lot of equipment designed to keep Firefighters as safe as possible, their job is to run toward when everyone else is running away. Some of the equipment was used to release people trapped after car crashes. We were amazed to learn that the cutters were powered by a battery, no different to the ones on cordless drills and the like but could deliver 30 tons of cutting power for over 40 minutes.

Andy was very keen to point out that Market Bosworth Fire Station is a community asset. Andy ensured that we all knew the importance of smoke detectors. If anyone has a faulty one or would like to have detectors fitted the Fire Service will fit them entirely free of charge. They are viewed as that important. Should anyone like a Home Fire Safety visit it can be arranged via the internet here:

<https://lfrs.egressforms.com/Form/HomeFireSafetyCheck>

Please remember that Market Bosworth Community Library can help to get you on-line.

An unusual lecture for us, but very enjoyable, informative, and useful. It was 9:00pm before we knew it and time for Andy and Ash to leave, with our grateful thanks for the evening and also for the work they do.

June Lecture Meeting, - 20th June 7:30pm The Free Church, Barton Road

History of the Battlefield Line



Last August, as you may recall, we were guests of the Battlefield Line. We were given access to areas not normally accessible to visitors and were also given a short lecture about the history of the railway line. The lecture was only a taste of the wealth of historical information about the line which now serves, Shackerstone, Market Bosworth and Shenton stations. A number of members have said how much they enjoyed the short lecture and only wished that it was longer. Your committee agree wholeheartedly that we would all like to hear much more about the Battlefield Line and so we shall. We shall hear about the line's development in the 1800s right up to date including the time it has spent in private ownership. We shall also hear about the narrow-gauge railway (at one time one of the longest in the country) which served the World War 2 fuel dump which was supplied by the railway. Add to that information about the people and the engines and you have a fascinating lecture to look forward to. Coen and his colleagues have been very busy writing and researching to make this memorable. Please do try to get along if you can, I am certain that you will not be disappointed.

The Great Escape! 18th July 2019 in The Free Church, Barton Road, 7:30pm



Ask many people about the Second World War and the Great Escape crops up fairly quickly. Most, if not all have seen the film starring Steve McQueen, David Attenborough and James Garner and directed by John Sturges. There are many iconic scenes. But what was it really *Like*? What were conditions like before and after the escape attempt. We are fortunate to be able to hear what it was like from the diary of Peter Hall, who was imprisoned in Stalag Luft III and

number 75 on the list of escapees. Peter's diary will be shared with us by his two sons Neville and Michael. We will also hear about a much more poignant event which took place subsequently called The Long March, when just before midnight on 27 January 1945, 11,000 POWs were marched out of camp with the eventual destination of Spremberg in freezing temperatures and 15 cm (6 in) of snow. The Society are putting on the lecture in support of the Leicestershire and Rutland Festival of Archaeology and it will be advertised in their brochure. Entry is completely free and therefore it is likely that the seats will be full early on. Come along and meet Neville and Michael, plus, of course, Tom, Dick, and Harry.

Summer Visits for 2019

July 11th, 2019



Picture courtesy of Visit Leicestershire

As usual we have two Summer Visits lined up and hope that they will prove interesting, entertaining, and enjoyable. Summer Visits are only open to members, and guests accompanying members, In July we will be led around part of Bradgate Park by Peter Liddle MBE.as our guide. Peter will be explaining to us the story of the park and also the archaeological knowledge discovered from recent test pitting. As we know from Bosworth Links, test pits can throw up some very interesting and unusual, if not unexpected, information. I have arranged for some car parking spaces outside of the Deer Barn Tea Rooms, but these spaces are limited and so I will be asking those planning to take advantage of them to car share wherever possible. The list will be available shortly and it will be on a first come first served basis. There will be some walking, but it is not planned to be long distances. There will be a cream tea afterwards (or similar) where we will be able to sit and chat about the park or any other subject of choice. This should be a fun and very social afternoon. Make a note in your diary (if you have not already) for the afternoon of the 11th July. The date is a little earlier as Bradgate Park do not allow cars in during any of the regular school holidays for safety reasons.

August 15th, 2019



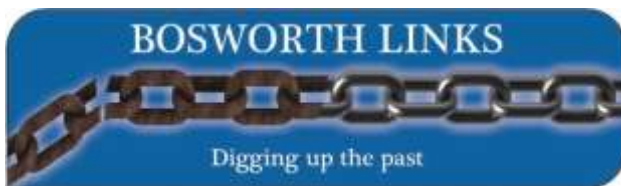
Photograph, courtesy of Evington Echo

In August we will be guided along the Glenfield Tunnel. Designed by George Stephenson. Opened in 1832 it is one of the earliest steam railway tunnels in the world and at the time of its opening, the longest. Construction of the tunnel was far from easy as the excavators encountered clay and shifting sand. The tunnel had to be fully brick lined and a brick kiln was actually built on site to supply the thousands of bricks needed. The visit will take place on the afternoon of the 15th August 2019. After the Summer Visit will be a

cream Tea, or similar and it is hoped that our guide for the afternoon will join us and answer any questions you may have.

We will shortly be looking at our activities for 2020 (I know, time does indeed fly) and would love to hear your ideas and suggestions. If you have a favourite place to share or would like to visit somewhere as a group please contact me or any member of the committee.

Come along with us and have a lovely summer.



Free Church Friends and Neighbours Meeting

Earlier this month I was delighted to be invited to attend the Free Church Friends and Neighbours Meeting. They meet on the first Wednesday of every month at 2:30pm. It felt almost like I had come full circle as it was to this group that Peter and I first pitched our idea of Bosworth Links, in the search for volunteers and there were some volunteer present today. I was able to show what we had done over the preceding two years and what we had discovered about our settlement. The group listened with interest and enjoyed the presentation. I managed to answer all of the questions, although some were challenging. It is a very friendly group so much so that one of the members penned a poem about the occasion, which I share here. I have only ever had one poem before and that was when I left Lloyd's Bank, that is certainly not for publication.

What Lies Beneath?

What lies beneath can sometimes be
An unusual part of our history
Hidden from sight until one day
A Nigel comes to light the way

With careful hands he scrapes and sifts
Unlocks the earth and finds the gifts
That their stories from the past
Which lift the shadows that were cast?
And keep us guessing What? Where? When?
With patient hope for a rainbows end
Remember then when gifts we find
To share them too with all mankind
Sheila Cole

Thank you Sheila, although you endow me with far too much credit, I think for Nigel one should read the Bosworth Links volunteers. I had a lovely afternoon and I hope the Friends and Neighbours did so too.

The Little Dig 2019

After two years of two big digs, Bosworth Links will be having a little dig. We have some dates for your diary, Saturday 6th July 2019, and Sunday 7th July 2019. These are the test pit dates for this year. We will need volunteers in the form of diggers, recorders, washers, and collectors. No experience necessary. If you have not yet registered as a volunteer it is never too late. Just go to www.marketbosworthsociety.com/volunteer/ and fill in a volunteer form. If you are not sure if you are registered with us, then fill in the form. No harm done if you are already listed, the harm would be done if you miss out. We are aiming for 6 pits this year and whilst, at the time of going to print, we do not have all of the permissions we need we have enough and some alternatives to definitely proceed. The next date is Saturday 30th August 2019 and Sunday 31st August 2019 where we plan to excavate the ring ditch on the Market Bosworth Country Park. There is a proviso about this, we need to confirm that we can do what we want to do with the Park Management and that we are fully satisfied that there is something to excavate. Hence the longer lead in date. But let me rewind a little....

Ring Ditch

I was given a gentle prod by a very good friend of mine just recently. I realised that I had been going on about the potential ring ditch in the Country Park but had not actually explained what a ring ditch was and why it might be important and significant. Thank you! Well, for those who know you can skip this bit but for anyone else I will try to explain what a ring ditch is and why the one in the Country Park is a tempting excavation site.

The archaeological definition is a trench of circular or penannular (having the shape or design of an incomplete circle) plan, cut into bedrock. What is much more interesting is why they were created. The ring ditch is created from where the earth was removed in order to make a mound. Under the mound would have been, a cremation urn or more rarely, under larger mounds intact bodies. Ring ditches can be dated back to Neolithic and Bronze age eras and so as we now know Bosworth had a Bronze Age Funeral Landscape, it is not surprising that we may encounter a number of burial sites. Most often these mounds have been ploughed out over

time but the disturbance to the earth where the ditch was created remains. I do not have room here for a fuller explanation but that about covers it.



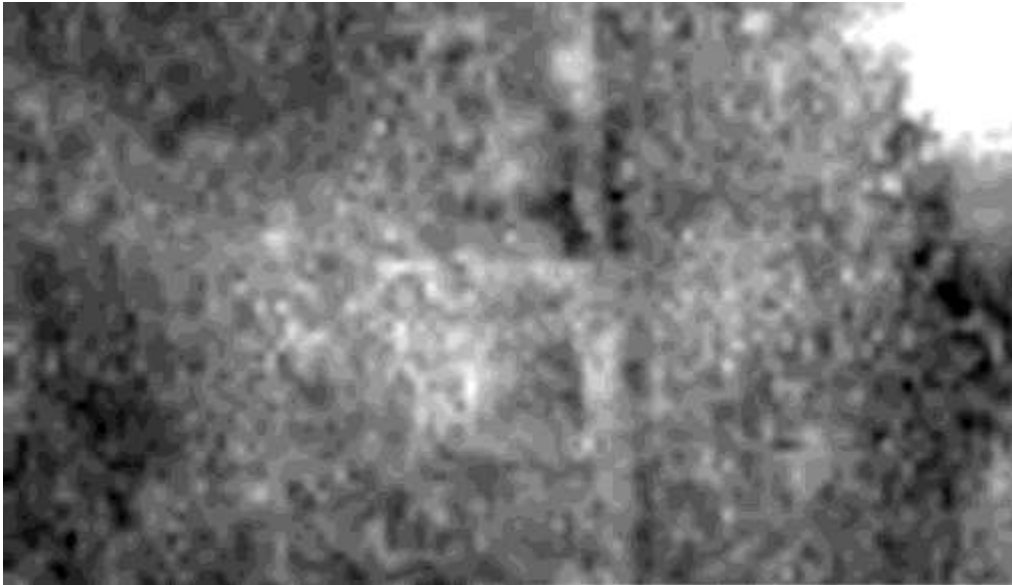
How do we know where they are; you may ask? A very good question. and without aviation it would not be easy, even will a nearby hill. Finding a ring ditch is not at all easy. Ring ditches are usually shown up by ariel photography under certain conditions. Parched photographs (seen left) are one of the most well-known methods. During periods of very dry weather, the Summers of 1976 and 2018 are good examples, the grass covering withers which makes shapes in the landscape much easier to see. LIDAR (which is accepted these days to be an acronym of Light Imaging, Detecting and Ranging) is basically where a laser is shone on an area and the resultant reflections used to create an image. Different frequencies (colours) will present different results. Lidar images and pictures do not show up very well at this size and resolution and so I have placed them on-line for you to see. Please use the Market Bosworth Community Library facilities to get on-line if you do not have a computer, tablet, or

smartphone. The volunteers there will be delighted to help you see the images loaded up for you.

<http://marketbosworthsociety.com/country-park-photographs-lidar-and-resisivity-results/>

Next comes a resistivity survey. We are very lucky in that we have a number of contacts with the equipment who are happy to carry out surveys for us for free. “Just for the fun of it” as one said recently, without irony. Seen above is an action shot of Roger (left) and Keith. Roger is holding a cable which is connected to a 12-volt car battery. The negative terminal of that battery is secured to the ground by an iron spike. Just under Keith’s right foot is a line which is used to make sure that the survey is accurate. A tape measure lies nearby. The two probes on the underside of the yellow bar are pushed a few inches (centimetres) into the earth. The resistance

is recorded by the smart phone like device attached to the handlebar. The variance in resistance is recorded and can later be accessed by a computer programme. Different soils and densities offer differing resistances. A stone for example offers more resistance than a patch of soft earth. If you were to look down upon a grid it would look very much like a series of ladders lying on the ground side by side. The sides of the ladders are the red lines and the rungs where the probes were pushed into the earth. As you can tell I am no expert but that is enough technical detail for now. Suffice to say that it is amazing to note that a ditch dug out in the Neolithic era can still offer a difference resistance to surrounding ground and that can be read by the recording equipment and computer programme.



This picture (shown left) is one of the actual images from the Country Park survey. It needs to be much larger to be seen properly but I think you can still see some light and dark areas which represent

areas offering different resistance. The darker areas are less resistant to the passage of electricity and the light areas more so. You can see in the top right an area of white. That is where the equipment detected a large area of very compact ground. We are not sure what it is yet, but it could be the cricket pavilion foundations, which was once in that area or it could be some hard standing for vehicles. There are some clear lines on the picture, the one from centre left, top to left bottom is the result of some drainage activity. The area in the middle is interesting and that is where the ring ditch is reported to be.

The only certain way of finding out what lies below is to excavate. But at least parched pictures, LIDAR and resistivity can help us to rule out or in areas for investigation. There are some interesting websites and I have linked some to the images page for you to see.

Advertise your event

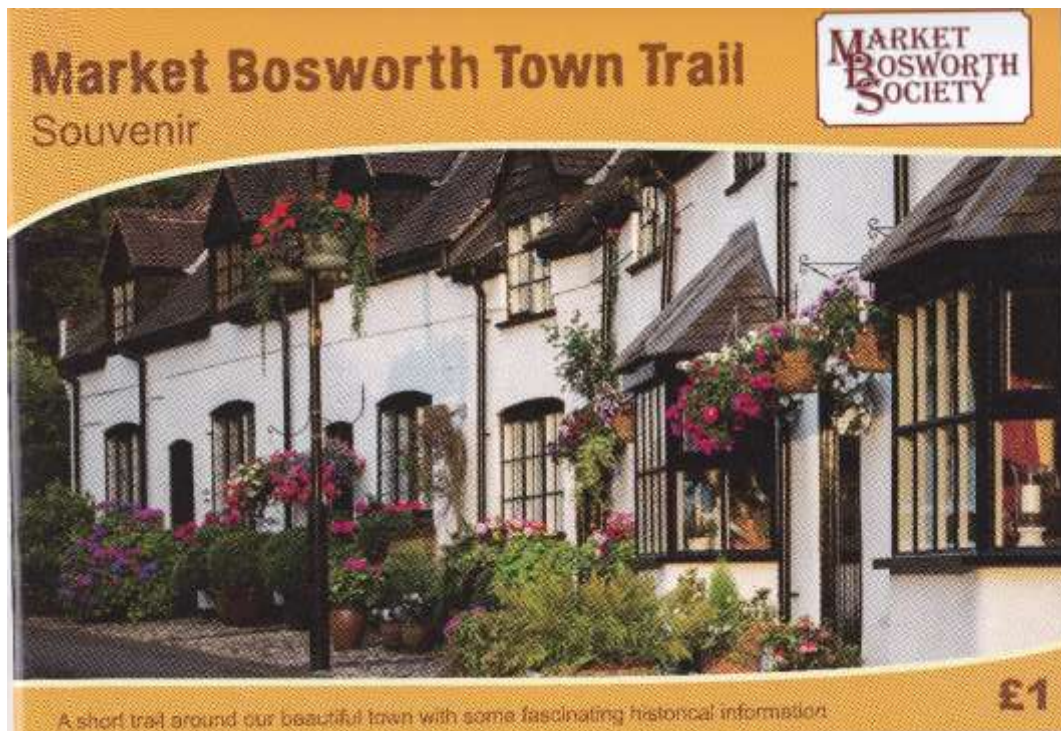


A short while ago the Market Bosworth Community Interest Company launched a website called www.marketbosworth.org. The idea behind it was to create a web-based calendar available to residents of Market Bosworth and also to visitors. This will help to avoid clashes when planning events and then to publicise those events. It will also show visitors what is taking place in Market Bosworth and help with

planning a visit. The website is supported by businesses who advertise there, take a look and see. If you are a member of a group or know of a group that would like to share its events with residents or visitors or both (the site gets hundreds of visits daily) then ask them to get in touch via the website, or by email to enjoymarketbosworth@gmail.com It is very easy to sign up and publicise your events and not expensive. For example, club and society memberships start from just £12.00 per year.

New Town Trail Guide and Souvenir (TTS)

I am delighted to report that after eighteen months of challenging work the new guide is on sale.



I am very grateful to all of the committee members who contributed to this new guide and also to Dean at The Graphic print for a really great design You can pick up a copy from the Mercury News, Michaelmas House, Bosworth Hall Hotel, Bosworth Battlefield Heritage Centre and the Market Bosworth Community Library. If you would like to stock the TTS then please get in touch (details below). The guide is invaluable for anyone visiting Market Bosworth. Here are just two of the photographs in the TTS



Can you tell where they were taken?

Well done, Barton Road and Shenton Lane. Do buy a copy to see all of the pictures and to read the text.

And finally

Can you help? This is a new service to Market Bosworth and the surrounding area. If you know of anyone, friend, neighbour, relative, anyone who could use a little help then please show this to them. Private offices and home visits are available and could be a real help to someone struggling with all these forms and Government Services.



A free Information and Advice service for Market Bosworth and surrounding Villages.

Do you or someone you know need some advice or support on the following –

Attendance Allowance?

Pension Credit?

Carers Allowance?

Blue Badge Application?

Housing Benefit?

An Age UK advisor is now able to provide confidential information and advice sessions in our office at the Parish Hall or through a home visit available by appointment.

We also offer help to complete the forms.

For more information, please contact us via

Phone: 0116 299 2278

Email: marketbosworth@ageukleics.org.uk

This is an initiative run in partnership with Market Bosworth Community Interest Company (CIC) and funded by Market Bosworth Parish Council and the Leicestershire Shire Grants.



Contact Details:

Please see the website www.marketbosworthsociety.com for information or email on info@marketbosworthsociety.com or if you would like to call me then 07930149408 or 01455290160 Membership cheques and correspondence can be sent to Market Bosworth Society, c/o 29 Warwick Lane, Market Bosworth, Leicestershire. CV13 0JU

A handwritten signature in black ink, appearing to read 'Nigel Palmer', written in a cursive style.

Nigel Palmer, Chairman